



SGRM / SSMR

*Schweizerische Gesellschaft für Reproduktionsmedizin  
Société Suisse de Médecine de la Reproduction*

## **FIVNAT-CH**

***Schweizerische Gesellschaft für Reproduktionsmedizin  
Société Suisse de Médecine de la Reproduction***

***Annual report 2008***

***Cycles 2007***

*Final version*

*Date of analysis 31/01/2009*

*Author: Costanzo Limoni, FIVNAT Statistician, 6826 Riva S Vitale (TI)*



## SUMMARY TABLE

Page

<b>SUMMARY RESULTS.....</b>	<b>3</b>
PARTICIPATING CENTRES AND TREATMENT CYCLES .....	3
PATIENTS DEMOGRAPHY .....	3
DISTRIBUTION OF NUMBER OF CYCLES PER PATIENT .....	3
CYCLES WITH DONOR SPERM.....	3
TREATMENT CYCLES AND MAIN RESULTS.....	4
CLINICAL PREGNANCIES FOLLOW-UP .....	4
CHILDREN DELIVERIES .....	5
CHILD STATUS AT BIRTH (1) .....	5
CHILD STATUS AT BIRTH (2) .....	5
MALFORMATIONS .....	6
CHILD STATUS AT BIRTH ACCORDING TO SPERM ORIGIN .....	6
MALFORMATIONS ACCORDING TO SPERM ORIGIN .....	6
<b>EVOLUTION OF INITIATED CYCLES BY TECHNIQUE.....</b>	<b>7</b>
<b>SIZE OF CLINICS.....</b>	<b>8</b>
<b>TYPE OF INFERTILITY .....</b>	<b>9</b>
<b>INDICATIONS TO TREATMENT .....</b>	<b>9</b>
<b>TYPE OF STIMULATION.....</b>	<b>10</b>
<b>TRANSFER COMPLICATIONS.....</b>	<b>11</b>
<b>AGE OF WOMEN EVOLUTION (1994-2007).....</b>	<b>12</b>
<b>OOCYTES OBTAINED, FERTILIZED AND EMBRYOS TRANSFERRED.....</b>	<b>13</b>
<b>USE OF EMBRYOS, ZYGOTES AND FERTILIZED OOCYTES .....</b>	<b>14</b>
<b>DETAILED RESULTS BY TECHNIQUE FRESH CYCLES .....</b>	<b>15</b>
<b>DETAILED RESULTS BY TECHNIQUE CRYO CYCLES.....</b>	<b>16</b>
<b>PREGNANCY RATES BY WOMAN'S AGE.....</b>	<b>17</b>
FRESH CYCLES .....	17
CRYO CYCLES.....	17
<b>PREGNANCY RATES BY NB OF TRANSFERRED EMBRYOS .....</b>	<b>18</b>
FRESH CYCLES .....	18
CRYO CYCLES.....	18
<b>PREGNANCY RATES BY TRANSFER DAY .....</b>	<b>19</b>
<b>PREGNANCY RATES BY CENTER .....</b>	<b>20</b>



## SUMMARY RESULTS<sup>1</sup>

### PARTICIPATING CENTRES AND TREATMENT CYCLES

FIVNAT STATISTICS 2007	2005	2006	2007	EVOLUTION 2007/2006
Participating centres	22	24	25	+ 1
Available centres	22	24	25	+ 1
Number of treated patients	3'827	4'426*	4'826	+ 9.0%
Treatment cycles FRESH	3'466	4'060	4'503	+ 10.9%
CRYO	2'660	3'049	3'312	+ 8.6%
TOTAL	6'126	7'109	7'815	+ 9.9%

\* 2'559 new patients in 2007

### PATIENTS DEMOGRAPHY

FIVNAT STATISTICS 2007	N	%
Living in Switzerland	3'985	82.6%
Living abroad	698	14.4%
Missing	143	3.0%

### DISTRIBUTION OF NUMBER OF CYCLES PER PATIENT

FIVNAT STATISTICS 2007	N	%
1	2'852	59.2%
2	1'244	25.8%
3	499	10.4%
≥4	231	4.6%
TOTAL NB OF PATIENTS	4'826	

### CYCLES WITH DONOR SPERM

FIVNAT STATISTICS 2007	FRESH	CRYO	TOTAL
All Initiated cycles	4'503	3'312	7815
All Patients	3531	1295	4826
Patients with donor	170	8	178
....% of all Patients	3.8%	0.6%	3.7%
Cycles with donor'sperm	218	12	230
....% of all Initiated cycles	4.8%	0.4%	2.9%

<sup>1</sup> In some cases and for all tables, the sum of percentages may add up to 100%, due to rounding. All calculations have been performed using SAS (Statistical Analysis System, Cary, NJ, USA, version 8.2)



## TREATMENT CYCLES AND MAIN RESULTS

FIVNAT STATISTICS 2007	FRESH	CRYO	TOTAL
Initiated cycles	4503	3312	7815
Cycles by patients living in CH	80.2%	88.6%	83.8%
Patients	3752	2250	6002
New patients	2559	.	2559
New patients % of all patients	68.2%		
OPU % of initiated cycles	91.5%	98.2%	94.4%
Transfers % of initiated cycles	82.9%	90.7%	86.2%
Transfers % of OPU cycles	90.5%	92.3%	91.3%
....% of Initiated cycles	4.8%	0.4%	2.9%
Clinical pregnancies	1137	619	1756
....% of Initiated cycles	25.2%	18.7%	22.5%
....% of OPU cycles	27.6%	19.0%	23.8%
....% of Transfer cycles	30.5%	20.6%	26.1%
....% of Patients treated	30.3%	27.5%	29.3%
Implantation rate (%)	17.2%	12.0%	15.0%

## CLINICAL PREGNANCIES FOLLOW-UP

FIVNAT STATISTICS 2007	FRESH	CRYO	TOTAL
Clinical pregnancies	1137	619	1756
Deliveries	836	417	1253
.....% of Clinical pregnancies	73.5%	67.4%	71.4%
Spontaneous abortions	228	151	379
.....% of Clinical pregnancies	20.1%	24.4%	21.6%
Extra uterine pregnancies	34	25	59
.....% of Clinical pregnancies	3.0%	4.0%	3.4%
Extra and intra uterine pregnancies	2	.	2
.....% of Clinical pregnancies	0.2%	.	0.1%
Selective abortion	6	4	10
.....% of Clinical pregnancies	0.5%	0.6%	0.6%
Unknown results	33	22	55
.....% of Clinical pregnancies	2.9%	3.6%	3.1%



## CHILDREN DELIVERIES

FIVNAT STATISTICS 2007	FRESH	CRYO	TOTAL
Deliveries	836	417	1253
Singletons	669	364	1033
.....% of deliveries	80.0%	87.3%	82.4%
Twins	157	50	207
.....% of deliveries	18.8%	12.0%	16.5%
Triplets	3	3	6
.....% of deliveries	0.4%	0.7%	0.5%
Unknown	33	22	55
.....% of deliveries	3.9%	5.3%	4.4%
<b>TOTAL NB OF DELIVERED KNOWN CHILDREN</b>	<b>998</b>	<b>473</b>	<b>1471</b>

## CHILD STATUS AT BIRTH (1)

FIVNAT STATISTICS 2007	CRYO	FRESH	TOTAL
Alive	985	472	1457
	98.7%	99.8%	99.0%
Dead in uterus	2	0	2
	0.2%	0	0.1%
Unknown	11	1	12
	1.1%	0.2%	0.8%

## CHILD STATUS AT BIRTH (2)

FIVNAT STATISTICS 2007	CRYO	FRESH	TOTAL
Good	974	462	1436
	97.6%	97.7%	97.6%
Dead in uterus	2	0	2
	0.2%	0	0.1%
Living with complications	5	1	6
	0.5%	0.2%	0.4%
Neonatal death < Day 28	3	0	3
	0.3%	0	0.2%
Neonatal death < Day 7	3	9	12
	0.3%	1.9%	0.8%
Unknown	11	1	12
	1.1%	0.2%	0.8%



## MALFORMATIONS

FIVNAT STATISTICS 2007	CRYO	FRESH	TOTAL
Malformations	15	3	18
	1.5%	0.6%	1.2%
Unknown	8	1	9
	0.8%	0.2%	0.6%

## CHILD STATUS AT BIRTH ACCORDING TO SPERM ORIGIN

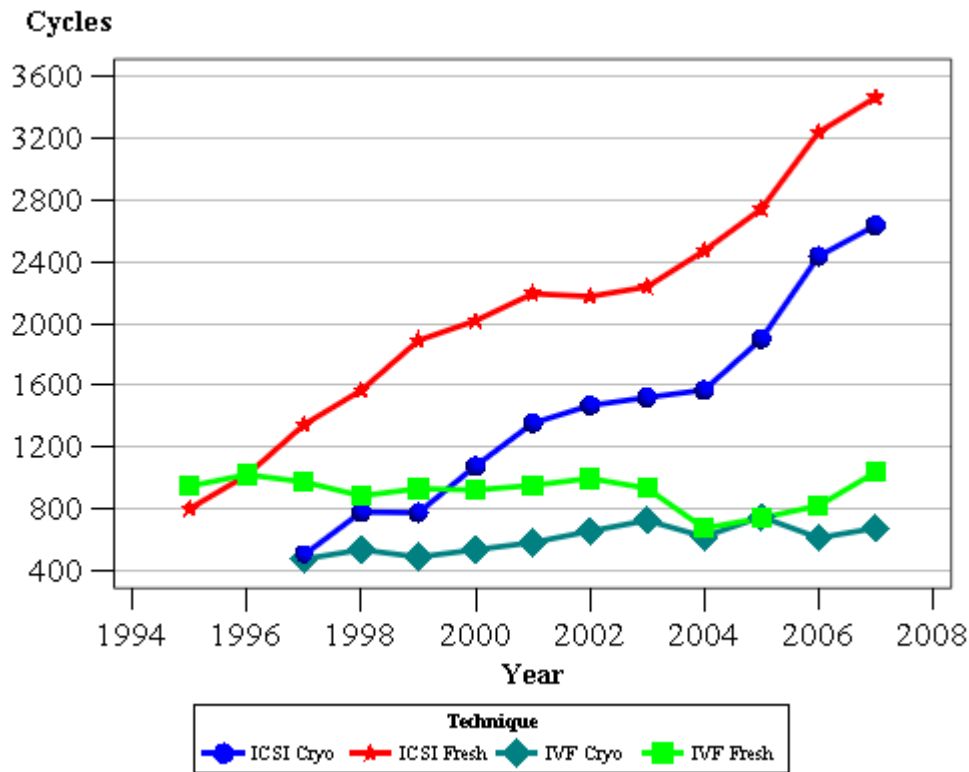
FIVNAT STATISTICS 2007	SPERM ORIGIN		TOTAL
	Partner	Donor	
Alive	1394	63	1457
	99.0%	100.0%	99.0%
Dead in uterus	2	0	2
	0.1%	0	0.1%
Unknown	12	0	12
	0.9%	0	0.8%

## MALFORMATIONS ACCORDING TO SPERM ORIGIN

FIVNAT STATISTICS 2007	SPERM ORIGIN		TOTAL
	Partner	Donor	
Malformations	17	1	18
	1.2%	1.6%	1.2%
Unknown	9	0	9
	0.6%	0	0.6%



## EVOLUTION OF INITIATED CYCLES BY TECHNIQUE

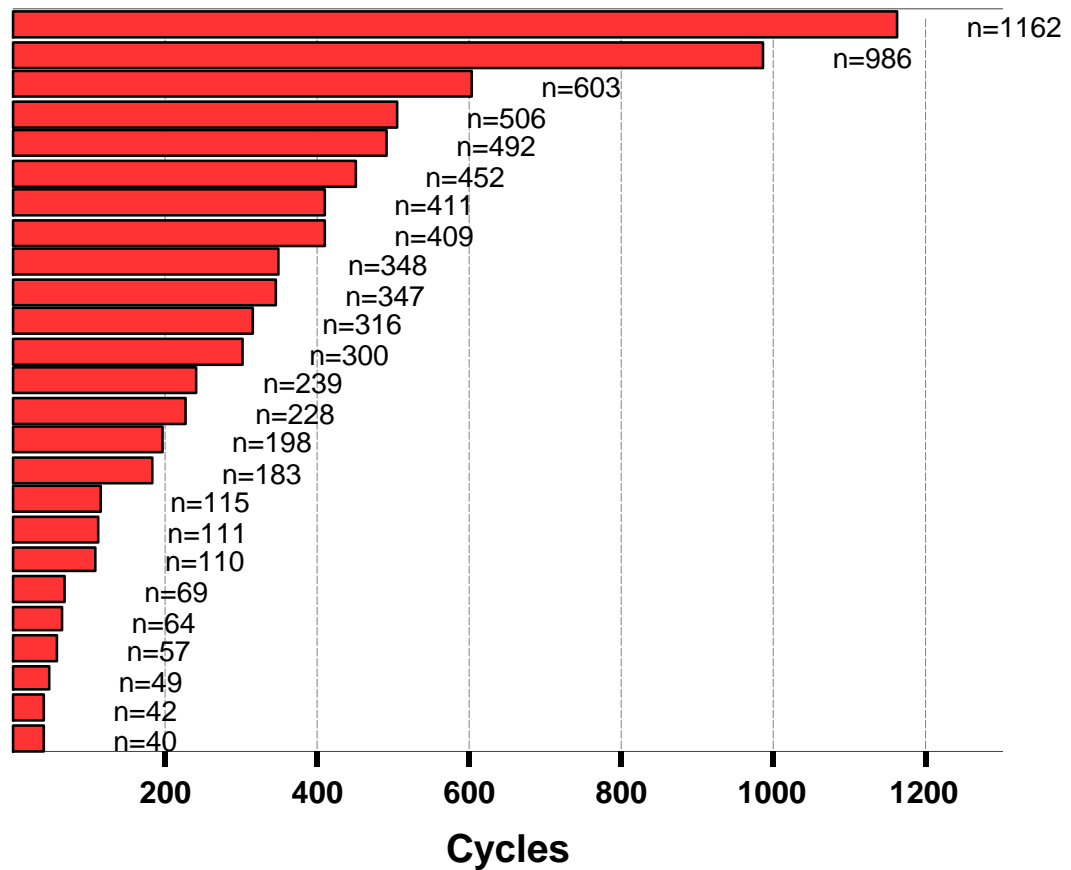


TECHNIQUE	2002	2003	2004	2005	2006	2007
IVF Fresh	1000	934	664	722	821	1038
ICSI Fresh	2174	2238	2481	2744	3239	3465
<b>TOTAL FRESH</b>	<b>3174</b>	<b>3172</b>	<b>3145</b>	<b>3466</b>	<b>4060</b>	<b>4503</b>
IVF Cryo	656	726	642	759	613	676
ICSI Cryo	1470	1522	1638	1901	2436	2577
<b>TOTAL CRYO</b>	<b>2155*</b>	<b>2371*</b>	<b>2573*</b>	<b>2660</b>	<b>3049</b>	<b>3312</b>
<b>TOTAL</b>	<b>5329</b>	<b>5533</b>	<b>5718</b>	<b>6126</b>	<b>7109</b>	<b>7815</b>

\*The 'ICSI Cryo' total includes also all cryopreserved cycles without known technique (59)(see page 16).



## SIZE OF CLINICS



SIZE OF CLINICS	<100 cycles	100-199 cycles	200-499 cycles	500-999 cycles	>1000 cycles
Frequency	7	4	9	4	1
Percent	28.0%	16.0%	36.0%	16.0%	4.0%



## TYPE OF INFERTILITY

TYPE OF INFERTILITY	ALL PATIENTS	
FEMALE		
Primary	3486	71.2%
Secondary	1281	26.5%
Unknown	59	1.2%
TOTAL	4826	
MALE		
Primary	3566	73.9%
Secondary	1177	24.4%
Unknown	83	1.7%
TOTAL	4826	

## INDICATIONS TO TREATMENT

INDICATION TO TREATMENT	ALL PATIENTS		NEW PATIENTS	
Tubal	442	9.2%	194	7.6%
Male	2149	44.5%	1130	44.2%
IVF with donor sperm	32	0.7%	21	0.8%
Immunological male	17	0.4%	9	0.4%
Anovulation/Dysovulation	181	3.8%	102	4.0%
Endometriosis	250	5.2%	123	4.8%
Idiopathic	469	9.7%	247	9.7%
HIV	2	0.0%	2	0.1%
Unknown	1096	22.7%	629	24.6%
Multiple	188	3.9%	102	4.0%
TOTAL	4826		2559	

Only one cycle per patient is considered



## TYPE OF STIMULATION

FIVNAT-CH STATISTICS	Year								
	1999	2000	2001	2002	2003	2004	2005	2006	2007
Cycles initiated	4163	4649	5133	5378	5529	5718	6126	7109	7815
....% FRESH cycles	67.4%	63.9%	61.3%	59.8%	57.4%	55.0%	56.6%	57.1%	54.6%
....% THAWED cycles	32.5%	36.1%	38.7%	40.2%	42.7%	45.0%	43.4%	42.9%	42.4%
Stimulation FRESH CYCLES:									
URINARY	67.0%	44.0%	38.8%	42.8%	47.0%	50.0%	53.0%	56.8%	53.1%
.....RECOMBINANT	24.6%	46.2%	49.3%	48.2%	49.2%	44.5%	39.9%	36.3%	35.9%
.....OTHER	3.3%	3.5%	6.0%	7.4%	1.8%	5.0%	5.9%	6.1%	10.4%
.....NONE	5.1%	6.3%	5.8%	1.6%	1.9%	0.6%	1.2%	0.8%	0.6%
Stimulation THAWED CYCLES:									
URINARY	4.6%	5.1%	4.8%	5.0%	5.6%	8.5%	9.7%	8.6%	7.8%
.....RECOMBINANT	3.5%	7.7%	9.9%	14.1%	11.6%	11.8%	8.0%	4.8%	3.9%
.....OTHER	23.1%	24.6%	29.0%	26.7%	18.3%	20.9%	19.6%	26.8%	27.8%
.....NONE	68.8%	62.6%	56.3%	54.3%	64.5%	58.8%	62.7%	59.8%	61.5%

Some cycles have missing information regarding stimulation



## TRANSFER COMPLICATIONS

YEAR	TYPE OF INCIDENT*							
	NONE		OTHER		OHSS amb.		OHSS hosp.	
	N	%	N	%	N	%	N	%
1993	1045	95.7%	1	0.1%	37	3.4%	9	0.8%
1994	1434	97.6%	1	0.1%	26	1.8%	9	0.6%
1995	1644	99.3%	1	0.1%	9	0.5%	1	0.1%
1996	1998	98.6%	1	0.0%	22	1.1%	5	0.2%
1997	2216	99.3%	2	0.1%	11	0.5%	2	0.1%
1998	2548	97.8%	6	0.2%	32	1.2%	20	0.8%
1999	2441	98.2%	2	0.1%	32	1.3%	12	0.5%
2000	2602	97.7%	6	0.2%	43	1.6%	12	0.5%
2001	2673	98.0%	2	0.1%	41	1.5%	11	0.4%
2002	2821	96.1%	11	0.4%	76	2.6%	26	0.9%
2003	2771	95.6%	12	0.4%	89	3.1%	26	0.9%
2004	3155	96.0%	15	0.5%	97	3.1%	13	0.5%
2005	2881	98.9%	3	0.1%	54	1.8%	20	0.7%
2006	3481	97.6%	8	0.2%	53	1.5%	24	0.7%
2007	4487	96.8%	21	0.5%	98	2.1%	29	0.6%

\*In percent of cycles with ovarian stimulation

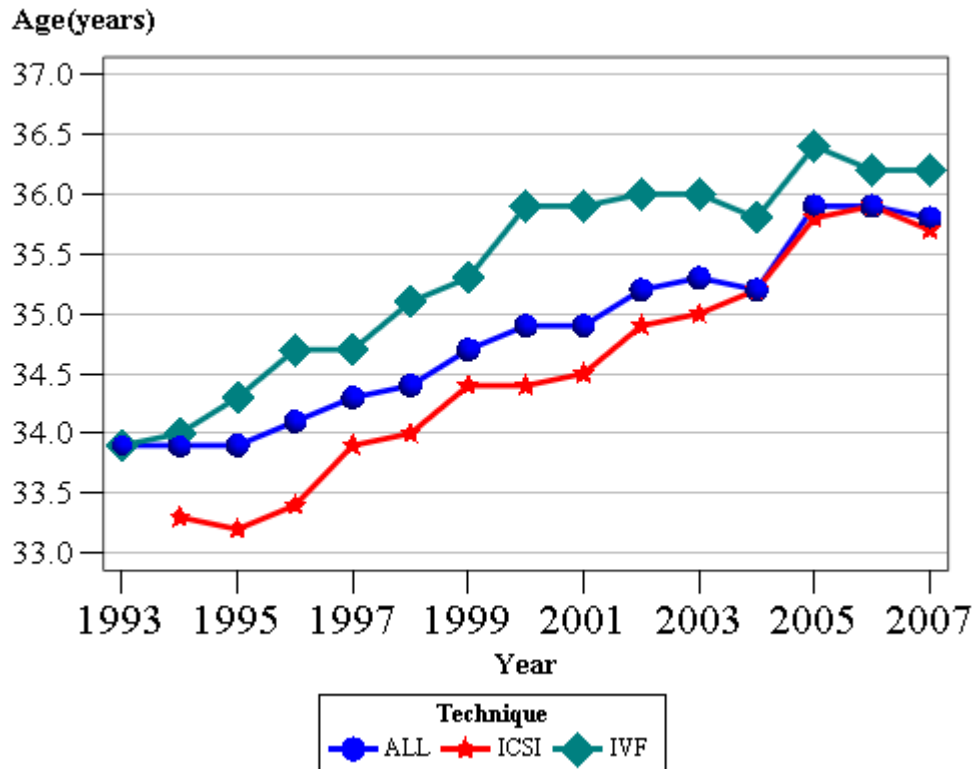
OHSS: Ovarian Hyperstimulation Syndrome

hosp. = with hospitalization

amb. = without hospitalization



## AGE OF WOMEN EVOLUTION (1994-2007)



TECHNIQUE	1998	1999	2000	2001	2002	2003	2004	2005	2006	2007
IVF	35.1	35.3	35.9	35.9	36.0	36.0	35.8	36.4	36.2	36.2
ICSI	34.0	34.4	34.4	34.5	34.9	35.0	35.2	35.8	35.9	35.7
TOTAL	34.4	34.7	34.9	34.9	35.2	35.3	35.3	35.9	35.9	35.8



## OOCYTES OBTAINED, FERTILIZED AND EMBRYOS TRANSFERRED

FIVNAT-CH STATISTICS 2007	FRESH	CRYO	TOTAL
Initiated cycles	4503	3312	7815
Cycles in % by technique	57.60%	42.40%	100.00%
Oocytes collected	38433	52	38485
Oocytes fertilized	32749	51	32800
Zygotes 2PN obtained	21345	35	21380
....% of inseminated oocytes	65.20%	68.60%	65.20%
Cleaved embryos	8329	6022	14351
Frozen zygotes	12661	26	12687
Frozen embryos	107	0	107
Thawed zygotes	0	8276	8276
Thawed embryos	0	99	99
Embryos/Oocytes transferred	7802	5817	13619
.....Median	2	2	2
.....Transfer of 1 embryo	12.8%	22.9%	17.3%
.....Transfer of 2 embryos	65.3%	59.9%	62.9%
.....Transfer of 3 embryos	21.9%	17.0%	19.7%
.....Max	3	3	3



## USE OF EMBRYOS, ZYGOTES AND FERTILIZED OOCYTES

FIVNAT-CH STATISTICS 2006	FRESH	CRYO	DESTR.	TOTAL
Total nb of destroyed embryos	404	567	31	1002
In laboratory	281	513	0	794
	69.6%	90.5%	0.0%	79.2%
.....Development stop	88	355	0	443
	21.8%	62.6%	0	44.2%
.....Bad development potential	169	125	0	294
	41.8%	22.0%	0	29.3%
.....Decision of patient	21	27	0	48
	5.2%	4.8%	0	4.8%
.....Other reasons	3	3	0	6
	0.7%	0.5%	0	0.6%
In clinic (vaginal)	120	54	0	174
	29.7%	9.5%	0.0%	17.4%
For research	3	0	31	34
	0.7%	0.0%	100.0%	3.4%
.....Decision of patient	0	0	0	0
.....Lost contact	0	0	0	0
.....End of contract	3	0	22	25
	0.7%	0	71.0%	2.5%
.....Other reasons	0	0	0	0

	FRESH	CRYO	DESTR.	TOTAL
Total nb of destroyed zygotes	0	95	1497	1592
.....Decision of patient	0	0	951	951
		0	63.5%	59.7%
.....Lost contact	0	0	135	135
		0	9.0%	8.5%
.....End of contract	0	12	401	413
		12.6%	26.8%	25.9%
.....Other reasons	0	83	10	93
		87.4%	0.7%	5.8%



## DETAILED RESULTS BY TECHNIQUE

## FRESH CYCLES

FIVNAT STATISTICS 2007- FRESH CYCLES	TECHNIQUE		TOTAL
	IVF	ICSI	
Initiated cycles	1038	3465	4503
Patients	873	2879	3752
Cycles by patients living in CH	64.6%	84.9%	80.2%
Cycles in % by technique	23.1%	76.9%	100.0%
Age woman ..... Mean	36.5	36.0	36.1
..... Median	37	36	36
..... Q1	34	33	33
..... Q3	40	39	39
Oocyte pick-up	886	3235	4121
....% of initiated cycles	85.4%	93.4%	91.5%
Transfers	802	2929	3731
....% of initiated cycles	77.3%	84.5%	82.9%
....% of OPU cycles	90.5%	90.5%	90.5%
Transfers with donor'sperm	162	56	218
....% of Initiated cycles	15.6%	1.6%	4.8%
Oocytes collected	8105	30328	38433
Oocytes fertilized	7910	24839	32749
Zygotes 2PN obtained	4672	16673	21345
....% of inseminated oocytes	59.1%	67.1%	65.2%
Cleaved embryos	1713	6616	8329
Frozen zygotes	2907	9754	12661
Frozen embryos	32	75	107
Embryos/Oocytes transferred	1628	6174	7802
..... Median	2	2	2
..... MAX	3	3	3
Biochemical pregnancies	35	124	159
Clinical pregnancies	249	888	1137
....% of Initiated cycles	24.0%	25.6%	25.2%
....% of OPU cycles	28.1%	27.4%	27.6%
....% of Transfer cycles	31.0%	30.3%	30.5%
Implantation rate (%)	18.5%	16.8%	17.2%
Deliveries	185	651	836
.....% of Initiated cycles	17.8%	18.8%	18.6%
.....% of OPU cycles	20.9%	20.1%	20.3%
.....% of Transfer cycles	23.1%	22.2%	22.4%



## DETAILED RESULTS BY TECHNIQUE      CRYO CYCLES

FIVNAT STATISTICS 2007 - CRYO CYCLES	TECHNIQUE			TOTAL
	IVF	ICSI	UNKNOWN	
Initiated cycles	676	2577	59	3312
Patients	475	1734	41	2250
Cycles by patients living in CH	79.7%	91.2%	76.3%	88.6%
Cycles in % by technique	20.4%	77.8%	1.8%	100.0%
Age woman ..... Mean	36.3	35.4	36.3	35.6
..... Median	37	36	37	36
..... Q1	34	33	33	33
..... Q3	39	39	39	39
Transfers	629	2350	25	3004
....% of initiated cycles	93.0%	91.2%	42.4%	90.7%
Transfers with donor's sperm	0	12	0	12
....% of Transfer cycles	0.0%	0.5%	0.0%	0.4%
Thawed zygotes	1722	6495	59	8276
Thawed embryos	25	66	8	99
Embryos transferred	1222	4556	39	5817
..... Median	2	2	2	2
..... MAX	3	3	3	3
Biochemical pregnancies	34.00	94.00	0.00	128.00
Clinical pregnancies	130	485	4	619
....% of Initiated cycles	19.2%	18.8%	6.8%	18.7%
....% of Transfer cycles	20.7%	20.6%	16.0%	20.6%
Implantation rate (%)	11.9%	12.0%	12.8%	12.0%
Deliveries	91	322	4	417
.....% of Initiated cycles	13.5%	12.5%	6.8%	12.6%
.....% of Transfer cycles	14.5%	13.7%	16.0%	13.9%



## PREGNANCY RATES BY WOMAN'S AGE

### FRESH CYCLES

FIVNAT STATISTICS 2007	-30		30-34		35-39		40-44		45+	
	IVF	ICSI	IVF	ICSI	IVF	ICSI	IVF	ICSI	IVF	ICSI
Initiated cycles	74	361	289	984	443	1445	200	644	29	29
Clinical pregnancies	62	307	244	863	348	1241	136	500	9	17
% of Initiated cycles	83.8%	85.0%	84.4%	87.7%	78.6%	85.9%	68.0%	77.6%	31.0%	58.6%
% of OPU cycles	26	125	87	295	116	386	20	81	0	1
% of Transfer cycles	35.1%	34.6%	30.1%	30.0%	26.2%	26.7%	10.0%	12.6%	0.0%	3.4%
Deliveries	38.8%	36.3%	32.1%	31.4%	30.8%	28.3%	12.8%	14.3%	0.0%	4.8%
% of Initiated cycles	41.9%	40.7%	35.7%	34.2%	33.3%	31.1%	14.7%	16.2%	0.0%	5.9%
% of OPU cycles	19	93	66	226	88	291	12	41	.	.
% of Transfer cycles	30.6%	30.3%	27.0%	26.2%	25.3%	23.4%	8.8%	8.2%	.	.
Singletons	16	65	46	184	71	240	12	35	.	.
.....% of deliveries	84.2%	69.9%	69.7%	81.4%	80.7%	82.5%	100.0%	85.4%	.	.
Twins	3	24	20	40	17	47	.	6	.	.
.....% of deliveries	15.8%	25.8%	30.3%	17.7%	19.3%	16.2%	.	14.6%	.	.
Triplets	.	.	.	1	.	2	.	.	.	.
.....% of deliveries	.	.	.	0.4%	.	0.7%	.	.	.	.

### CRYO CYCLES

FIVNAT STATISTICS 2007	-30		30-34		35-39		40-44		45+	
	IVF	ICSI	IVF	ICSI	IVF	ICSI	IVF	ICSI	IVF	ICSI
Initiated cycles	40	289	204	873	302	1052	126	355	3	6
Transfers	40	264	190	807	280	955	115	316	3	6
% of initiated cycles	100.0%	91.3%	93.1%	92.4%	92.7%	90.8%	91.3%	89.0%	100.0%	100.0%
Clinical pregnancies	11	60	45	183	49	202	25	38	0	1
% of Initiated cycles	27.5%	20.8%	22.1%	21.0%	16.2%	19.2%	19.8%	10.7%	0.0%	16.7%
% of Transfer cycles	27.5%	22.7%	23.7%	22.7%	17.5%	21.2%	21.7%	12.0%	0.0%	16.7%
Deliveries	9	43	30	121	37	136	15	20	.	1
% of Initiated cycles	22.5%	14.9%	14.7%	13.9%	12.3%	12.9%	11.9%	5.6%	.	16.7%
% of Transfer cycles	22.5%	16.3%	15.8%	15.0%	13.2%	14.2%	13.0%	6.3%	.	16.7%
Singletons	8	34	27	103	32	122	14	19	.	1
.....% of deliveries	88.9%	79.1%	90.0%	85.1%	86.5%	89.7%	93.3%	95.0%	.	100.0%
Twins	1	9	3	17	5	12	1	1	.	.
.....% of deliveries	11.1%	20.9%	10.0%	14.0%	13.5%	8.8%	6.7%	5.0%	.	.
Triplets	.	.	.	1	.	2	.	.	.	.
.....% of deliveries	.	.	.	0.8%	.	1.5%	.	.	.	.



## PREGNANCY RATES BY NB OF TRANSFERRED EMBRYOS

### FRESH CYCLES

FIVNAT STATISTICS 2007	1 embryo		2 embryos		3 or more embryos	
	IVF	ICSI	IVF	ICSI	IVF	ICSI
Initiated cycles	105	371	568	1868	129	689
Clinical pregnancies	18	41	180	605	51	241
% of Transfer cycles	17.1%	11.1%	31.7%	32.4%	39.5%	35.0%
Deliveries	13	30	136	450	36	168
% of Transfer cycles	12.4%	8.1%	23.9%	24.1%	27.9%	24.4%
Singletons	13	30	102	369	30	123
.....% of deliveries	100.0%	100.0%	75.0%	82.0%	83.3%	73.2%
Twins	.	.	34	78	6	39
.....% of deliveries	.	.	25.0%	17.3%	16.7%	23.2%
Triplets	.	.	.	1	.	2
.....% of deliveries	.	.	.	0.2%	.	1.2%

### CRYO CYCLES

FIVNAT STATISTICS 2007	1 embryo		2 embryos		3 or more embryos	
	IVF	ICSI	IVF	ICSI	IVF	ICSI
Initiated cycles	136	544	393	1400	100	404
Clinical pregnancies	21	83	83	292	26	110
% of Transfer cycles	15.4%	15.3%	21.1%	20.9%	26.0%	27.2%
Deliveries	13	57	60	189	18	76
% of Transfer cycles	9.6%	10.5%	15.3%	13.5%	18.0%	18.8%
Singletons	13	56	53	169	15	55
.....% of deliveries	100.0%	98.2%	88.3%	89.4%	83.3%	72.4%
Twins	.	1	7	20	3	18
.....% of deliveries	.	1.8%	11.7%	10.6%	16.7%	23.7%
Triplets	.	.	.	.	.	3
.....% of deliveries	.	.	.	.	.	3.9%



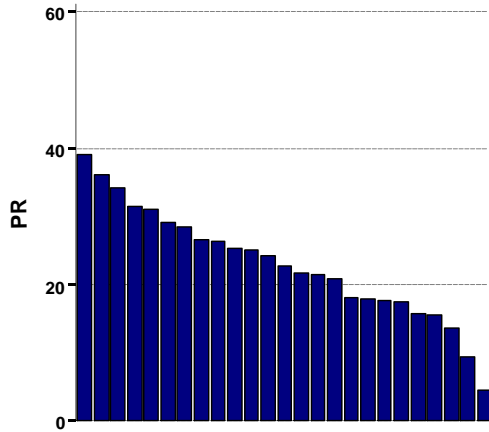
## PREGNANCY RATES BY TRANSFER DAY

FIVNAT STATISTICS 2007	2 days		3 days		4+ days	
	IVF	ICSI	IVF	ICSI	IVF	ICSI
Transfer cycles	547	210	26	1997	742	83
Transfer cycles in % by day	100.0%	100.0%	100.0%	100.0%	100.0%	100.0%
Clinical pregnancies	168	71	7	614	215	30
% of Transfer cycles	30.7%	33.8%	26.9%	30.7%	29.0%	36.1%
Deliveries	128	49	7	448	152	28
% of Transfer cycles	23.4%	23.3%	26.9%	22.4%	20.5%	33.7%
Singletons	102	38	4	368	115	24
.....% of deliveries	79.7%	77.6%	57.1%	82.1%	75.7%	85.7%
Twins	26	11	3	76	35	2
.....% of deliveries	20.3%	22.4%	42.9%	17.0%	23.0%	7.1%
Triplets	.	.	.	1	1	1
.....% of deliveries	.	.	.	0.2%	0.7%	3.6%

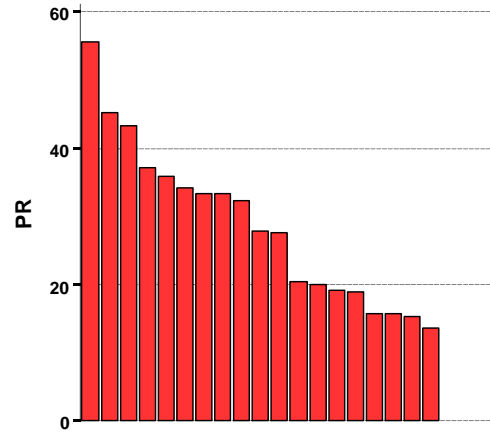


## PREGNANCY RATES BY CENTER

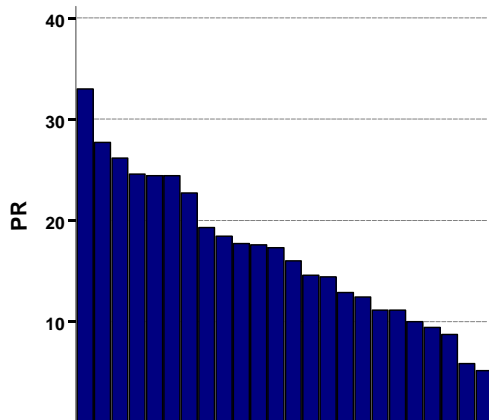
AFTER ICSI FRESH CYCLES



AFTER IVF FRESH CYCLES



AFTER ICSI CRYO CYCLES



AFTER IVF CRYO CYCLES

