



SGRM / SSMR

*Schweizerische Gesellschaft für Reproduktionsmedizin
Société Suisse de Médecine de la Reproduction*

FIVNAT-CH

***Schweizerische Gesellschaft für Reproduktionsmedizin
Société Suisse de Médecine de la Reproduction***

Annual report 2009

Cycles 2008

Final version

Date of analysis 31/12/2009

Author: Costanzo Limoni, FIVNAT Statistician, 6826 Riva S Vitale (TI)



SUMMARY TABLE

Page

SUMMARY RESULTS.....	3
PARTICIPATING CENTRES AND TREATMENT CYCLES	3
PATIENTS DEMOGRAPHY	3
DISTRIBUTION OF NUMBER OF TREATMENT CYCLES PER PATIENT.....	3
CYCLES WITH DONOR SPERM.....	3
TREATMENT CYCLES MAIN RESULTS	4
CLINICAL PREGNANCIES FOLLOW-UP	4
CHILDREN DELIVERIES	5
CHILD STATUS AT BIRTH (1)	5
CHILD STATUS AT BIRTH (2)	5
MALFORMATIONS	6
CHILD STATUS AT BIRTH ACCORDING TO SPERM ORIGIN	6
MALFORMATIONS ACCORDING TO SPERM ORIGIN	6
EVOLUTION OF INITIATED CYCLES BY TECHNIQUE.....	7
SIZE OF CLINICS.....	8
TYPE OF INFERTILITY	9
INDICATIONS TO TREATMENT	9
TYPE OF STIMULATION.....	10
TRANSFER COMPLICATIONS.....	11
AGE OF WOMEN EVOLUTION (1993-2008).....	12
OOCYTES OBTAINED, FERTILIZED AND EMBRYOS TRANSFERRED.....	13
USE OF EMBRYOS AND ZYGOTES	14
DETAILED RESULTS BY TECHNIQUE FRESH CYCLES.....	15
DETAILED RESULTS BY TECHNIQUE CRYO CYCLES	16
PREGNANCY RATES BY WOMAN'S AGE.....	17
FRESH CYCLES	17
CRYO CYCLES.....	17
PREGNANCY RATES BY NB OF TRANSFERRED EMBRYOS	18
FRESH CYCLES	18
CRYO CYCLES.....	18
PREGNANCY RATES BY DAY OF TRANSFER.....	19
FRESH CYCLES	19
PREGNANCY RATES BY CENTER AND INITIATED CYCLES.....	20



SUMMARY RESULTS¹

PARTICIPATING CENTRES AND TREATMENT CYCLES

FIVNAT STATISTICS	2006	2007	2008	EVOLUTION 2008/2007
Participating centres	24	25	25	0
Available centres	24	25	25	0
Number of treated patients	4'426*	4'826	5'223	+ 8.2%
Number of new patients	2'682	2'559	2'798	+ 9.3%
Treatment cycles FRESH	4'060	4'503	4'884	+ 8.5%
CRYO	3'049	3'312	3'593	+ 8.5%
TOTAL	7'109	7'815	8'477	+ 8.5%

PATIENTS DEMOGRAPHY

FIVNAT STATISTICS 2008	N	%
Living in Switzerland	4'403	84.3%
Living abroad	811	15.5%
Missing	9	0.2%

DISTRIBUTION OF NUMBER OF TREATMENT CYCLES PER PATIENT

FIVNAT STATISTICS 2008	N	%
1 cycle	3'105	59.4%
2 cycles	1'336	25.6%
3 cycles	535	10.3%
4 cycles or more	247	4.7%
TOTAL NB OF PATIENTS	5'223	

CYCLES WITH DONOR SPERM

FIVNAT STATISTICS 2008	FRESH	CRYO	TOTAL
All Initiated cycles	4'884	3'593	8'477
All Patients	3'858	1'365	5'223
Patients with donor	148	4	152
....% of all Patients	3.8%	0.3%	2.9%
Cycles with donor'sperm	174	8	182
....% of all Initiated cycles	3.6%	0.2%	2.2%
No of transfers with donor sperm	155	8	163
....% of all transfer cycles	3.9%	0.2%	2.2%

¹ In some cases and for all tables, the sum of percentages may add up to 100%, due to rounding.



TREATMENT CYCLES MAIN RESULTS

FIVNAT STATISTICS 2008	FRESH	CRYO	TOTAL
Initiated cycles	4'884	3'593	8'477
Patients	4'071	2'482	5'223*
Cycles by patients living in CH	83.6%	87.6%	85.3%
New patients	2'796	2	2'798
New patients % of all patients	68.7%	0.1%	53.6%
OPU % of initiated cycles	81.3%		85.6%
Transfers % of initiated cycles	87.9%	92.5%	89.9%
Transfers % of OPU cycles	92.5%	91.5%	92.3%
Clinical pregnancies	1'179	706	1'885
....% of Initiated cycles	24.1%	19.6%	22.2%
....% of OPU cycles	26.1%	19.9%	23.3%
....% of Transfer cycles	29.7%	21.5%	26.0%
Clinical pregnancies in % of patients treated in 2008 (Fresh+Cryo cycles)*			36.1%
Implantation rate (%)	17.5%	13.1%	15.6%

*Patients undergoing both fresh and cryo treatment cycles are considered only once in the total

CLINICAL PREGNANCIES FOLLOW-UP

FIVNAT STATISTICS 2008	FRESH	CRYO	TOTAL
Clinical pregnancies	1'179	706	1'885
Deliveries	856	498	1'354
.....% of Clinical pregnancies	72.6%	70.5%	71.8%
Spontaneous abortions	235	165	400
.....% of Clinical pregnancies	19.9%	23.4%	21.2%
Extra uterine pregnancies	31	24	55
.....% of Clinical pregnancies	2.6%	3.4%	2.9%
Extra and intra uterine pregnancies	4	1	5
.....% of Clinical pregnancies	0.3%	0.1%	0.3%
Selective abortion	12	2	14
.....% of Clinical pregnancies	1.0%	0.3%	0.7%
Unknown results	41	16	57
.....% of Clinical pregnancies	3.5%	2.3%	3.0%



CHILDREN DELIVERIES

FIVNAT STATISTICS 2008	FRESH	CRYO	TOTAL
Deliveries	856	498	1'354
Singletons	676	423	1'099
.....% of deliveries	79.0%	84.9%	81.2%
Twins	173	71	244
.....% of deliveries	20.2%	14.3%	18.0%
Triplets	4	2	6
.....% of deliveries	0.5%	0.4%	0.4%
Unknown	41	16	57
.....% of deliveries	4.8%	3.2%	4.2%
TOTAL NB OF DELIVERED KNOWN CHILDREN	1'035	571	1'606

CHILD STATUS AT BIRTH (1)

FIVNAT STATISTICS 2008	CRYO	FRESH	TOTAL
Alive	1'023	569	1'592
	98.8%	99.6%	99.1%
Dead in uterus	5	1	6
	0.5%	0.2%	0.4%
Unknown	7	1	8
	0.7%	0.2%	0.5%

CHILD STATUS AT BIRTH (2)

FIVNAT STATISTICS 2008	CRYO	FRESH	TOTAL
Good	1'016	566	1'582
	98.2%	99.1%	98.5%
Dead in uterus	5	1	6
	0.5%	0.2%	0.4%
Living with complications	2	0	2
	0.2%	0	0.1%
Neonatal death < Day 28	0	2	2
	0	0.4%	0.1%
Neonatal death < Day 7	5	1	6
	0.5%	0.2%	0.4%
Unknown	7	1	8
	0.7%	0.2%	0.5%



MALFORMATIONS

FIVNAT STATISTICS 2008	CRYO	FRESH	TOTAL
Malformations	16	8	24
	1.5%	1.4%	1.5%
Unknown	7	1	8
	0.7%	0.2%	0.5%

CHILD STATUS AT BIRTH ACCORDING TO SPERM ORIGIN

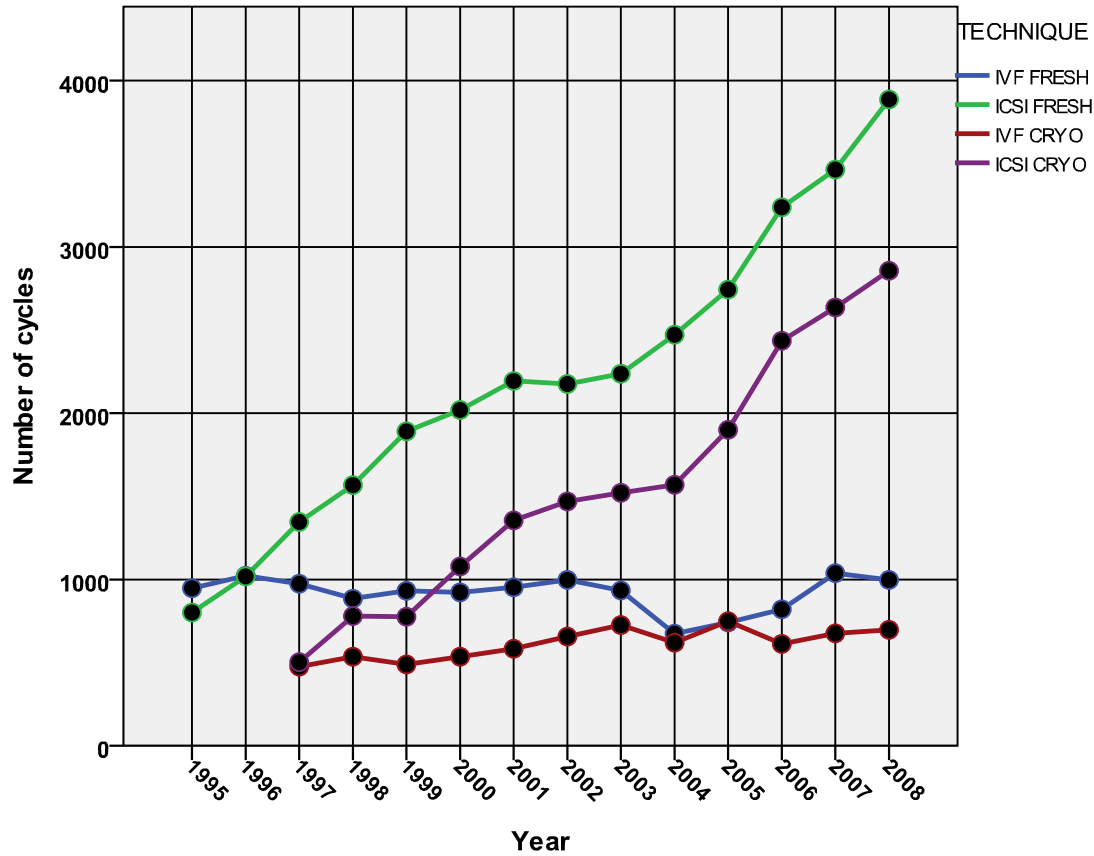
FIVNAT STATISTICS 2008	SPERM ORIGIN		TOTAL
	Partner	Donor	
Alive	1'531	61	1'592
	99.2%	98.4%	99.1%
Dead in uterus	6	0	6
	0.4%	0	0.4%
Unknown	7	1	8
	0.5%	1.6%	0.5%

MALFORMATIONS ACCORDING TO SPERM ORIGIN

FIVNAT STATISTICS 2008	SPERM ORIGIN		TOTAL
	Partner	Donor	
Malformations	21	3	24
	1.4%	4.8%	1.5%
Unknown	7	1	8
	0.5%	1.6%	0.5%



EVOLUTION OF INITIATED CYCLES BY TECHNIQUE

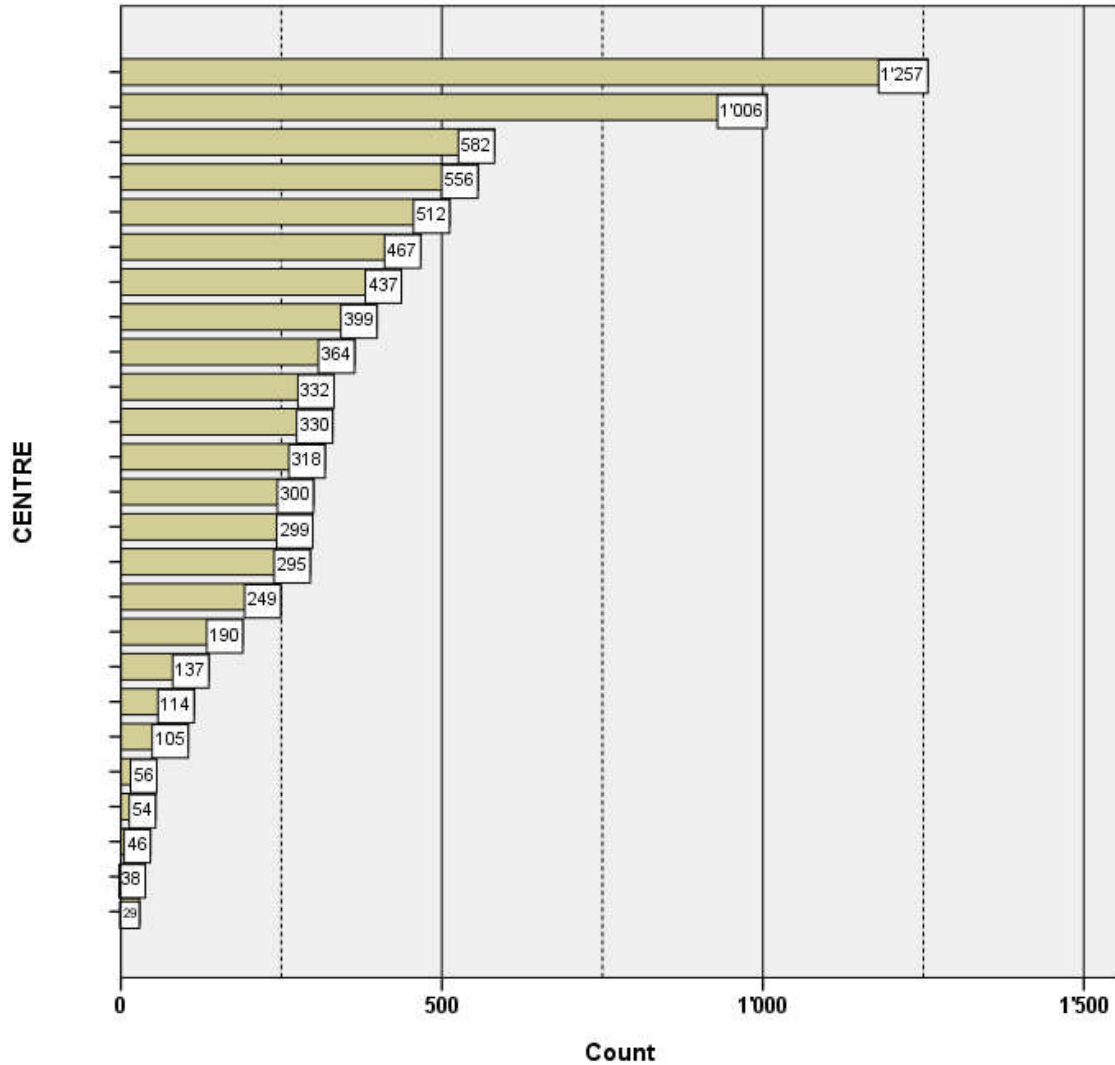


TECHNIQUE	2003	2004	2005	2006	2007	2008
IVF Fresh	934	664	722	821	1'038	997
ICSI Fresh	2'238	2'481	2'744	3'239	3'465	3'887
TOTAL FRESH	3'172	3'145	3'466	4'060	4'503	4'884
IVF Cryo	726	642	759	613	676	698
ICSI Cryo	1'522	1'638	1'901	2'436	2'577	2'847
TOTAL CRYO	2'371	2'573	2'660	3'049	3'312	3'583*
TOTAL	5'533	5'718	6'126	7'109	7'815	8'477

*The 'TOTAL Cryo' includes also all cryopreserved cycles without known technique: n=38 (see page 16).



SIZE OF CLINICS (TREATMENT CYCLES)



SIZE OF CLINICS	<100 cycles	100-199 cycles	200-499 cycles	500-999 cycles	>1000 cycles
Frequency	5	4	11	3	2
Percent	16.0%	44.0%	12.0%	8.0%	20.0%



TYPE OF INFERTILITY

TYPE OF INFERTILITY - 2008		ALL PATIENTS	
FEMALE			
Primary	3'685	71.3%	
Secondary	1'470	28.4%	
Unknown	12	0.3%	
TOTAL	5'167	100.0%	
MALE			
Primary	3'833	74.2%	
Secondary	1'317	25.5%	
Unknown	13	0.3%	
TOTAL	5'163	100.0%	

56 missing values for women, 60 for men

INDICATIONS TO TREATMENT

INDICATION TO TREATMENT - 2008	ALL PATIENTS		NEW PATIENTS	
	Count	%	Count	%
Tubal	454	8.7%	240	8.6%
Male	2'381	45.6%	1'279	45.7%
IVF with donor sperm	48	0.9%	30	1.1%
Immunological male	13	0.2%	6	0.2%
Anovulation/Dysovulation	192	3.7%	103	3.7%
Endometriosis	263	5.0%	119	4.3%
Idiopathic	454	8.7%	201	7.2%
HIV	5	0.1%	4	0.1%
Multiple	1'286	24.6%	742	26.5%
Unknown	127	2.5%	74	2.6%
TOTAL	5'223	100.0%	2'798	100.0%



TYPE OF STIMULATION

FIVNAT-CH STATISTICS	Year								
	2000	2001	2002	2003	2004	2005	2006	2007	2008
Cycles initiated	4'649	5'133	5'378	5'529	5'718	6'126	7'109	7'815	8'477
....% FRESH cycles	63.9%	61.3%	59.8%	57.4%	55.0%	56.6%	57.1%	55.6%	57.7%
....% THAWED cycles	36.1%	38.7%	40.2%	42.7%	45.0%	43.4%	42.9%	42.4%	42.3%
Stimulation FRESH CYCLES:									
URINARY	44.0%	38.8%	42.8%	47.0%	50.0%	53.0%	56.8%	53.1%	59.1%
.....RECOMBINANT	46.2%	49.3%	48.2%	49.2%	44.5%	39.9%	36.3%	35.9%	30.4%
.....OTHER	3.5%	6.0%	7.4%	1.8%	5.0%	5.9%	6.1%	10.4%	9.8%
.....NONE	6.3%	5.8%	1.6%	1.9%	0.6%	1.2%	0.8%	0.6%	0.7%
Stimulation THAWED CYCLES:									
URINARY	5.1%	4.8%	5.0%	5.6%	8.5%	9.7%	8.6%	7.8%	6.7%
.....RECOMBINANT	7.7%	9.9%	14.1%	11.6%	11.8%	8.0%	4.8%	3.9%	4.2%
.....OTHER	24.6%	29.0%	26.7%	18.3%	20.9%	19.6%	26.8%	27.8%	26.1%
.....NONE	62.6%	56.3%	54.3%	64.5%	58.8%	62.7%	59.8%	61.5%	63.0%

Some cycles had missing information regarding stimulation



TRANSFER COMPLICATIONS

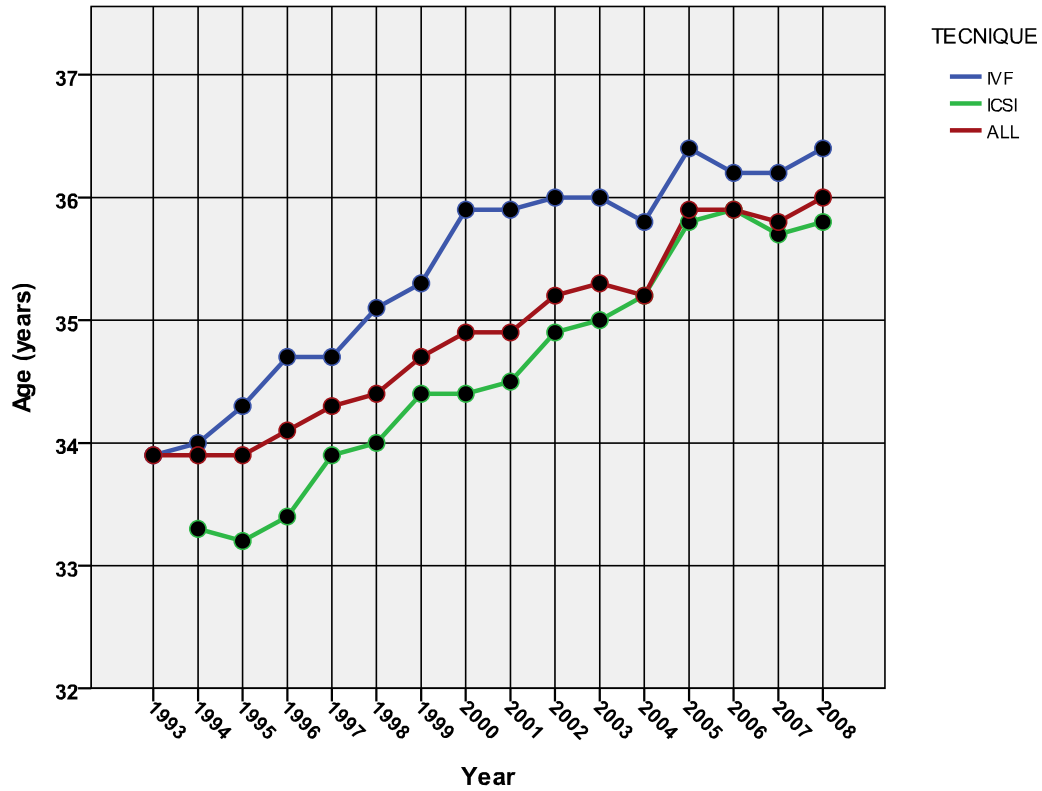
YEAR	TYPE OF INCIDENT*							
	NONE		OTHER		OHSS** without hospitalization		OHSS with hospitalization	
	N	%	N	%	N	%	N	%
1993	1'045	95.7%	1	0.1%	37	3.4%	9	0.8%
1994	1'434	97.6%	1	0.1%	26	1.8%	9	0.6%
1995	1'644	99.3%	1	0.1%	9	0.5%	1	0.1%
1996	1'998	98.6%	1	0.0%	22	1.1%	5	0.2%
1997	2'216	99.3%	2	0.1%	11	0.5%	2	0.1%
1998	2'548	97.8%	6	0.2%	32	1.2%	20	0.8%
1999	2'441	98.2%	2	0.1%	32	1.3%	12	0.5%
2000	2'602	97.7%	6	0.2%	43	1.6%	12	0.5%
2001	2'673	98.0%	2	0.1%	41	1.5%	11	0.4%
2002	2'821	96.1%	11	0.4%	76	2.6%	26	0.9%
2003	2'771	95.6%	12	0.4%	89	3.1%	26	0.9%
2004	3'155	96.0%	15	0.5%	97	3.1%	13	0.5%
2005	2'881	98.9%	3	0.1%	54	1.8%	20	0.7%
2006	3'481	97.6%	8	0.2%	53	1.5%	24	0.7%
2007	4'487	96.8%	21	0.5%	98	2.1%	29	0.6%
2008	4'761	97.4%	6	0.1%	83	1.7%	37	0.8%

*Type of incident for cycles with ovarian stimulation only

**OHSS= Ovarian Hyperstimulation Syndrome



AGE OF WOMEN EVOLUTION (1993-2008)



TECHNIQUE	1998	1999	2000	2001	2002	2003	2004	2005	2006	2007	2008
IVF	35.1	35.3	35.9	35.9	36.0	36.0	35.8	36.4	36.2	36.2	36.4
ICSI	34.0	34.4	34.4	34.5	34.9	35.0	35.2	35.8	35.9	35.7	35.8
TOTAL	34.4	34.7	34.9	34.9	35.2	35.3	35.3	35.9	35.9	35.8	36.0



OOCYTES OBTAINED, FERTILIZED AND EMBRYOS TRANSFERRED

FIVNAT-CH STATISTICS 2008	FRESH	CRYO	TOTAL
Initiated cycles	4'884	3'593	8'477
Cycles in % by technique	57.6%	42.4%	100.0%
Oocytes collected	42'264	1'844	44'108
Oocytes fertilized	35'529	672	36'201
Zygotes 2PN obtained	22'761	885	23'646
....% of inseminated oocytes	64.1%	131.7%	65.3%
Cleaved embryos	8'655	6'543	15'198
Frozen zygotes	13'452	362	13'814
Frozen (or refrozen) embryos	94	4	98
Thawed zygotes	0	9'032	9'032
Thawed embryos	0	78	78
Embryos/Oocytes transferred	8'096	6'237	14'333
.....Median	2	2	2
.....Transfer of 1 embryo	14.7%	24.2%	19.0%
.....Transfer of 2 embryos	66.8%	61.4%	64.3%
.....Transfer of 3 embryos	18.6%	14.2%	16.6%
.....Max	3	3	3



USE OF EMBRYOS AND ZYGOTES

FIVNAT-CH STATISTICS 2008	FRESH	CRYO	DESTR.	TOTAL
Total nb of destroyed embryos	584	640	0	1'224
In laboratory	446	564	0	1'010
	76.60%	88.10%	0	82.70%
.....Development stop	209	424	0	633
	35.90%	66.30%	0	51.80%
.....Bad development potential	121	79	0	200
	20.80%	12.30%	0	16.40%
.....Decision of patient	14	13	0	27
	2.40%	2.00%	0	2.20%
.....Other reasons	102	30	0	132
	17.50%	4.70%	0	10.80%
In clinic (vaginal)	135	76	0	211
	23.20%	11.90%	0	17.30%
For research	3	0	0	3
	0.005%	0.00%	0.00%	0.005%
.....Decision of patient	3	0	0	3
	100%	0.00%	0.00%	100%
.....Lost contact	0	0	0	0
	0.00%	0.00%	0.00%	0.00%
.....End of contract	0	0	0	0
	0.00%	0.00%	0.00%	0.00%
.....Other reasons	0	0	0	0
	0.00%	0.00%	0.00%	0.00%

	FRESH	CRYO	DESTR.	TOTAL
Total nb of destroyed zygotes	0	119	1'351	1'470
.....Decision of patient	0	0	764	764
	0.00%	0.00%	56.60%	52.00%
.....Lost contact	0	0	146	146
	0.00%	0.00%	10.80%	9.90%
.....End of contract	0	0	435	435
	0.00%	0.00%	32.20%	29.60%
.....Other reasons	0	119	6	125
	0.00%	100.00%	0.40%	8.50%



DETAILED RESULTS BY TECHNIQUE

FRESH CYCLES

FIVNAT STATISTICS 2008- FRESH CYCLES	TECHNIQUE		TOTAL
	IVF	ICSI	
Initiated cycles	997	3'887	4'884
Patients	831	3'240	4'071
Cycles by patients living in CH	62.4%	89.0%	83.6%
Cycles in % by technique	20.4%	79.6%	100.0%
Age woman Mean	36.9	36.0	36.2
..... Median	37	36	36
..... . Q1	34	33	33
..... ... Q3	40	39	39
Oocyte pick-up	914	3'605	4'519
....% of initiated cycles	91.7%	92.7%	92.5%
Transfers	767	3'203	3'970
....% of initiated cycles	76.9%	82.4%	81.3%
....% of OPU cycles	83.9%	88.8%	87.9%
Transfers with donor'sperm	128	46	174
....% of Initiated cycles	12.8%	1.2%	3.6%
Oocytes collected	8'090	34'174	42'264
Oocytes fertilized	7'734	27'795	35'529
Zygotes 2PN obtained	4'390	18'371	22'761
....% of inseminated oocytes	56.8%	66.1%	64.1%
Cleaved embryos	1'580	7'075	8'655
Frozen zygotes	2'692	10'760	13'452
Frozen embryos	12	82	94
Embryos/Oocytes transferred	1'504	6'592	8'096
..... Median	2	2	2
..... MAX	3	3	3
Biochemical pregnancies	35	155	190
Clinical pregnancies	224	955	1'179
....% of Initiated cycles	22.5%	24.6%	24.1%
....% of OPU cycles	24.5%	26.5%	26.1%
....% of Transfer cycles	29.2%	29.8%	29.7%
Implantation rate (%)	18.8%	17.2%	17.5%
Deliveries	166	690	856
.....% of Initiated cycles	16.6%	17.8%	17.5%
.....% of OPU cycles	18.2%	19.1%	18.9%
.....% of Transfer cycles	21.6%	21.5%	21.6%



DETAILED RESULTS BY TECHNIQUE CRYO CYCLES

FIVNAT STATISTICS 2008 - CRYO CYCLES	TECHNIQUE			TOTAL
	IVF	ICSI	UNKNOWN	
Initiated cycles	698	2'857	38	3'593
Patients	486	1'969	27	2'482
Cycles by patients living in CH	71.9%	91.4%	86.8%	87.6%
Cycles in % by technique	19.4%	79.5%	1.1%	100.0%
Age woman Mean	36.5	35.7	36.6	35.8
..... Median	37	36	37	36
..... Q1	34	33	34	33
..... Q3	40	39	39	39
Transfers	645	2'631	12	3'288
....% of initiated cycles	92.4%	92.1%	31.6%	91.5%
Transfers with donor's sperm	3	5	0	8
....% of Transfer cycles	0.5%	0.2%	0.0%	0.2%
Thawed zygotes	1'664	7'329	39	9'032
Thawed embryos	13	61	4	78
Embryos transferred	1'195	5'027	15	6'237
..... Median	2	2	1	2
..... MAX	3	3	3	3
Biochemical pregnancies	15	104	1	120
Clinical pregnancies	139	566	1	706
....% of Initiated cycles	19.9%	19.8%	2.6%	19.6%
....% of Transfer cycles	21.6%	21.5%	8.3%	21.5%
Implantation rate (%)	13.6%	13.0%	13.3%	13.1%
Deliveries	96	401	1	498
....% of Initiated cycles	13.8%	14.0%	2.6%	13.9%
....% of Transfer cycles	14.9%	15.2%	8.3%	15.1%



PREGNANCY RATES BY WOMAN'S AGE

FRESH CYCLES

FIVNAT STATISTICS 2007	-30		30-34		35-39		40-44		45+		TOTAL
	IVF	ICSI	IVF	ICSI	IVF	ICSI	IVF	ICSI	IVF	ICSI	
Initiated cycles	76	381	247	1'154	419	1'580	209	738	44	27	4'875
Transfers	66	316	202	984	343	1'309	139	570	15	19	3963
% of Initiated cycles	86.8%	82.9%	81.8%	85.3%	81.9%	82.8%	66.5%	77.2%	34.1%	70.4%	81.3%
Clinical pregnancies	30	128	64	352	115	385	15	90	0	0	1'179
% of Initiated cycles	39.5%	33.6%	25.9%	30.5%	27.4%	24.4%	7.2%	12.2%	0.0%	0.0%	24.2%
% of OPU cycles	41.1%	35.7%	28.1%	32.6%	29.5%	26.2%	8.2%	13.5%	0.0%	0.0%	26.1%
% of Transfer cycles	45.5%	40.5%	31.7%	35.8%	33.5%	29.4%	10.8%	15.8%	0.0%	0.0%	29.8%
Deliveries	26	99	57	279	78	264	5	48	.	.	856
% of Transfer cycles	39.4%	31.3%	28.2%	28.4%	22.7%	20.2%	3.6%	8.4%	.	.	21.6%
Singletons	17	72	43	221	66	208	5	44	.	.	676
.....% of deliveries	65.4%	72.7%	75.4%	79.2%	84.6%	78.8%	100.0%	91.7%	.	.	79.0%
Twins	9	26	14	58	11	51	.	4	.	.	173
.....% of deliveries	34.6%	26.3%	24.6%	20.8%	14.1%	19.3%	.	8.3%	.	.	20.2%
Triplets	1	3	4
.....% of deliveries	1.3%	1.1%	0.5%

CRYO CYCLES

FIVNAT STATISTICS 2007	-30		30-34		35-39		40-44		45+		TOTAL
	IVF	ICSI	IVF	ICSI	IVF	ICSI	IVF	ICSI	IVF	ICSI	
Initiated cycles	44	268	202	963	297	1'171	151	444	4	6	3'550
Transfers	41	249	188	895	277	1'071	136	406	3	5	3'271
% of Initiated cycles	93.2%	92.9%	93.1%	92.9%	93.3%	91.5%	90.1%	91.4%	75.0%	83.3%	92.1%
Clinical pregnancies	8	63	44	217	64	226	23	59	0	1	705
% of Initiated cycles	18.2%	23.5%	21.8%	22.5%	21.5%	19.3%	15.2%	13.3%	0.0%	16.7%	19.9%
% of Transfer cycles	19.5%	25.3%	23.4%	24.2%	23.1%	21.1%	16.9%	14.5%	0.0%	20.0%	21.6%
Deliveries	7	47	30	157	44	168	15	28	.	1	497
% of Initiated cycles	15.9%	17.5%	14.9%	16.3%	14.8%	14.3%	9.9%	6.3%	.	16.7%	14.0%
% of Transfer cycles	17.1%	18.9%	16.0%	17.5%	15.9%	15.7%	11.0%	6.9%	.	20.0%	15.2%
Singletons	7	36	23	134	36	146	14	25	.	1	422
.....% of deliveries	100.0%	76.6%	76.7%	85.4%	81.8%	86.9%	93.3%	89.3%	.	100.0%	84.9%
Twins	.	11	7	20	8	21	1	3	.	.	71
.....% of deliveries	.	23.4%	23.3%	12.7%	18.2%	12.5%	6.7%	10.7%	.	.	14.3%
Triplets	.	.	.	1	.	1	2
.....% of deliveries	.	.	.	0.6%	.	0.6%	0.4%

7 transfer cycles without known woman's age for fresh cycles and 17 for cryo cycles



PREGNANCY RATES BY NB OF TRANSFERRED EMBRYOS

FRESH CYCLES

FIVNAT STATISTICS 2008	1 embryo		2 embryos		3 or more embryos		TOTAL
	IVF	ICSI	IVF	ICSI	IVF	ICSI	
Transfer cycles	113	469	571	2'079	83	655	3'970
Clinical pregnancies	17	69	175	685	32	201	1'179
% of Transfer cycles	15.0%	14.7%	30.6%	32.9%	38.6%	30.7%	29.7%
Deliveries	14	49	129	513	23	128	856
% of Transfer cycles	12.4%	10.4%	22.6%	24.7%	27.7%	19.5%	21.6%
Singletons	14	48	100	408	17	89	676
.....% of deliveries	100.0%	98.0%	77.5%	79.5%	73.9%	69.5%	79.0%
Twins	.	1	28	100	6	38	173
.....% of deliveries	.	2.0%	21.7%	19.5%	26.1%	29.7%	20.2%
Triplets	.	.	1	2	.	1	4
.....% of deliveries	.	.	0.8%	0.4%	.	0.8%	0.5%

CRYO CYCLES

FIVNAT STATISTICS 2008	1 embryo		2 embryos		3 or more embryos		TOTAL
	IVF	ICSI	IVF	ICSI	IVF	ICSI	
Transfer cycles	159	632	422	1'596	64	401	3'274
Clinical pregnancies	22	75	99	379	18	112	705
% of Transfer cycles	13.8%	11.9%	23.5%	23.7%	28.1%	27.9%	21.5%
Deliveries	16	56	67	264	13	81	497
% of Transfer cycles	10.1%	8.9%	15.9%	16.5%	20.3%	20.2%	15.2%
Singletons	16	54	55	223	9	65	422
.....% of deliveries	100.0%	96.4%	82.1%	84.5%	69.2%	80.2%	84.9%
Twins	.	.	12	40	4	15	71
.....% of deliveries	.	.	17.9%	15.2%	30.8%	18.5%	14.3%
Triplets	.	.	.	1	.	1	2
.....% of deliveries	.	.	.	0.4%	.	1.2%	0.4%

14 Cryo cycles where the number of transferred embryos is unknown or zygotes where transferred



PREGNANCY RATES BY DAY OF TRANSFER

FRESH CYCLES

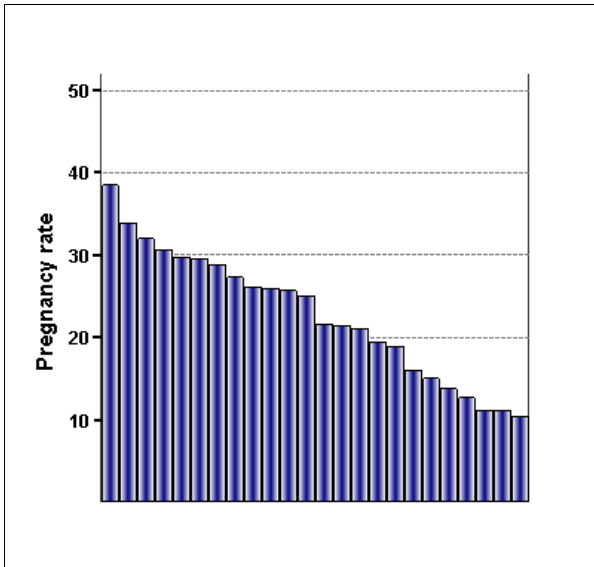
FIVNAT STATISTICS 2008	2 days		3 days		4+ days		TOTAL
	IVF	ICSI	IVF	ICSI	IVF	ICSI	
Transfer cycles	466	227	60	1'980	186	973	3'892
Clinical pregnancies	129	66	27	572	51	312	1'157
% of Transfer cycles	27.7%	29.1%	45.0%	28.9%	27.4%	32.10%	29.7%
Deliveries	92	51	21	418	39	217	838
% of Transfer cycles	19.7%	22.5%	35.0%	21.1%	21.0%	22.30%	21.5%
Singletons	75	37	17	331	28	174	662
.....% of deliveries	81.5%	72.5%	81.0%	79.2%	71.8%	80.20%	79.0%
Twins	16	14	4	85	11	40	170
.....% of deliveries	17.4%	27.5%	19.0%	20.3%	28.2%	18.40%	20.3%
Triplets	1	.	.	1	.	2	4
.....% of deliveries	1.1%	.	.	0.2%	.	0.90%	0.5%

72 cycles where the day of transfer is unknown

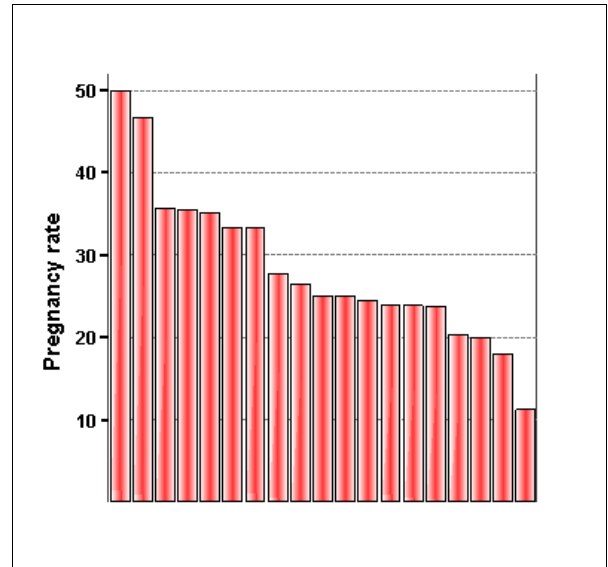


PREGNANCY RATES BY CENTER AND INITIATED CYCLES

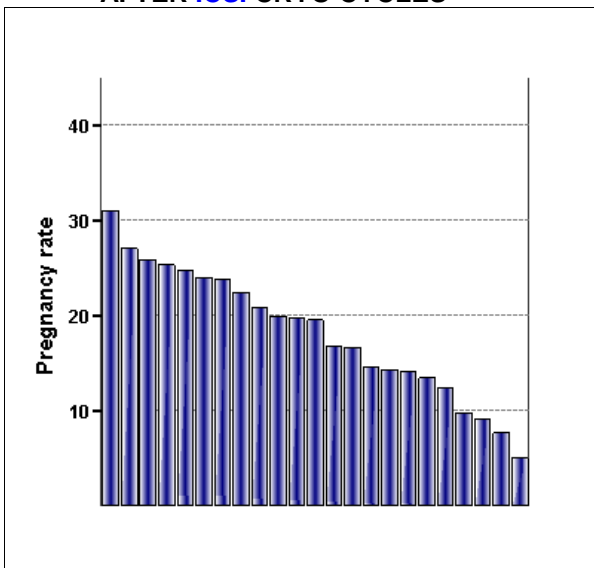
AFTER **ICSI** FRESH CYCLES



AFTER **IVF** FRESH CYCLES



AFTER **ICSI** CRYO CYCLES



AFTER **IVF** CRYO CYCLES

