



*Commission of the Swiss Society  
of Reproductive Medicine*



SWICE  
BIOLOGY WORKSHOP 2011  
Zürich

Thanks  
to



# New approach to look at gametes



## Scientific Programme

10:15-11:00 "How to choose the right sperm?" -

**Dr. Christian Sigg**

11:15-11:45 "Value of testicular mapping in non-obstructive azoospermia"

**Dr. Michael Häberle**

12:00-12:20 "Testicular sperm handling in the laboratory" -

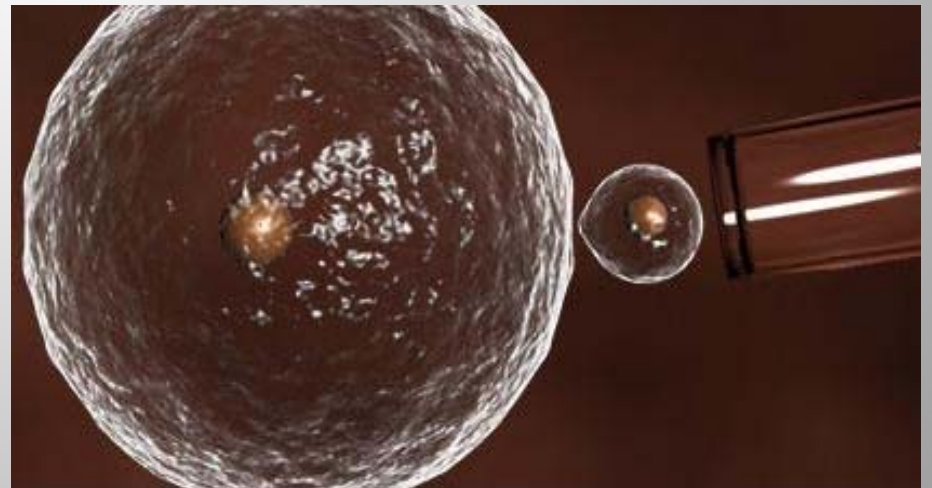
**Benedicte Weiss**

14:00-14:45 "Polar body analysis by CGH array"

**Cristina Magli**

15:00-15:30 News from the Swice commission and the FIVNAT database

**Franoise Urner**



# SWISSClinicalEmbryology

<sup>t</sup>  
[www.sgrm.org](http://www.sgrm.org)

General aims of SWICE are:

To promote continuous education and training for embryologists/technicians

To establish guidelines for laboratories involved in human ART

To organise external quality controls (EQC)

To exchange information between embryologists and between embryologists and clinicians

To act as laboratory experts of human ART for the patients, and for third parties, such as the general public, the media, the politicians, etc...

## SWICE Board



Véronique Cottin

Maria De Geyter

Philipp Scheurer

Alessandra Fusconi

Françoise Urner